



**BRADFORD  
MUSIC & ARTS  
SERVICE**

**DISCOVER  
WHAT WE  
CAN OFFER  
YOUR SCHOOL**

Academic  
Year  
**BUY BACK 25/26**



Supported using public funding by



**ARTS COUNCIL  
ENGLAND**

City of Bradford  
Metropolitan District Council



# **TABLE OF CONTENTS**

## **3 – INTRODUCTION**

### **MUSIC**

#### **INSTRUMENTAL LEARNING**

**5 – IN SCHOOL INSTRUMENTAL LESSONS**

**7 – INSTRUMENT HIRE/LOAN SERVICE**

**8 – WHOLE CLASS INSTRUMENTAL LEARNING**

**9 – MUSIC TECH WCIL**

**10 – MUSIC CENTRE GROUPS**

**11 – LARGE SCALE EVENTS**

**12 – SCHOOL BANDS, CHOIRS AND SINGING ASSEMBLIES**

**13 – MUSIC CURRICULUM DELIVERY**

#### **CONTINUED PROFESSIONAL DEVELOPMENT**

**14 – ONE TO ONE CLASSROOM SUPPORT**

**14 – STAFF MEETING SUPPORT**

**14 – CPD PROGRAMME**

**15 – NETWORK MEETINGS**

**15 – ANNUAL AUDIT PROCESS**

**16 – RESOURCES**

### **VISUAL ARTS**

**18 – ARTS DAYS**

**18 – INSET TRAINING**

**18 – CURRICULUM TEACHING**

**19 – MURALS**

**19 – NETWORK MEETINGS**

**19 – COMPETITIONS, EXHIBITIONS AND EVENTS**

**20 – ADVICE AND SUPPORT**

## **22 – CHARGING AND REMISSIONS POLICY**



# INTRODUCTION

Bradford Music & Arts Service is a department of Children's Services within City of Bradford Metropolitan District Council. We have a team of specialist teachers delivering a wide range of provision covering both music and the visual arts. To find out more about the Music & Arts Service, visit [www.bradfordmusiconline.co.uk](http://www.bradfordmusiconline.co.uk)

We are also the Lead Organisation of the West Yorkshire Music Hub and work in a close strategic partnership with Artforms Leeds, Calderdale Music, Musica Kirklees and Wakefield Music Service. Through this structure, we can gain DfE and Arts Council England funding to support musical provision and opportunities within the Bradford District that pupils can access directly or through their schools. To find out more about the West Yorkshire Music Hub, visit [www.westyorkshiremusichub.org.uk](http://www.westyorkshiremusichub.org.uk)

Bradford Music & Arts Service will continue to support schools in giving every pupil first access to instrumental tuition as well as providing progression opportunities and a range of performance and wider experiences to children.

As a service, we are committed to making every child's music matter in Bradford. Our services are packaged to provide all pupils with the opportunity for one year of whole class tuition and continuation. All of our service packages continue to be heavily subsidised and tailored to each school's individual needs.

First and foremost, we are here to support Bradford schools and children and we actively encourage all education settings to engage with our offer and provide high quality arts education for all. This document summarises our extensive offer. Please take a few moments to look at the many options available.

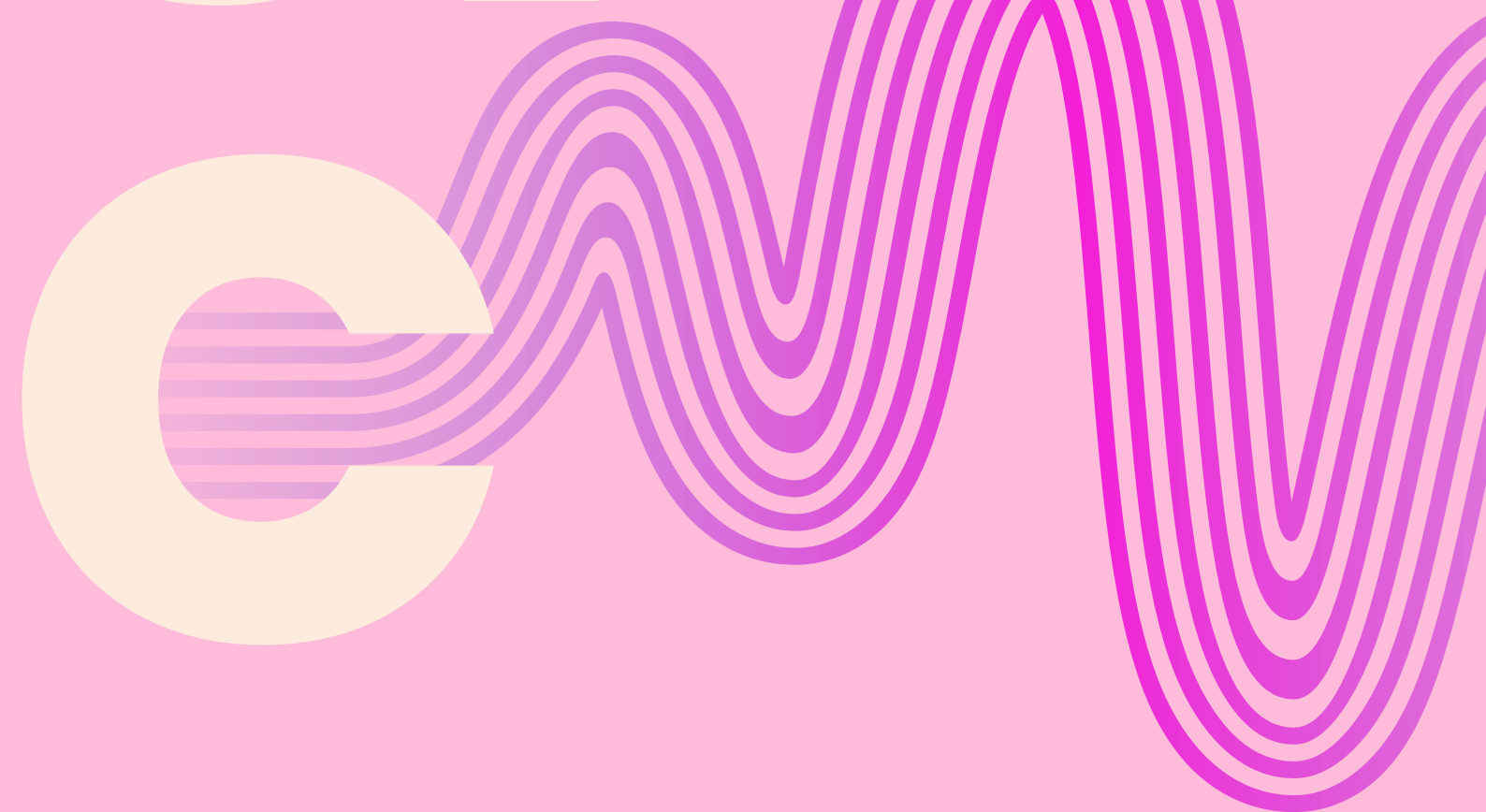


**Carl White**  
**Head of Service**



MU

SI





# IN SCHOOL INSTRUMENTAL LESSONS

In school instrumental tuition is available on a wide range of musical instruments and delivered by specialist teaching staff. We host a range of demonstration videos covering the instruments taught on our website which can be shared with parents and is available

[www.bradfordmusiconline.co.uk/site/demonstration-videos/](http://www.bradfordmusiconline.co.uk/site/demonstration-videos/)

Instrumental lessons follow progressive learning on the chosen instrument/s following The Common Approach and NQF and links into our Whole Class Instrumental Learning programme for schools as a part of the Pathway to Progression, ensuring that all schools are meeting their requirements set in The National Plan for Music Education.

Pupils can opt to take formal assessments such as:

- Graded practical and digital exams (ABRSM, Trinity, etc)
- Music Medals

Subsidised access to instrumental lessons is available where additional support is required. Please see our Remissions Policy on pages 22–23 for more details.

We have a range of payment options to fit your school community, and include:

- **Direct/Parental Billed**

Parental/direct billing is available via the Music & Arts Service where parents book instrumental/vocal lessons directly with the service. Parents are invoiced on a termly basis for the instrumental/vocal lessons delivered.

Parental/direct billing gives parents the option to pay by direct debit or credit/debit card.

Parental/Direct billing instrumental/vocal booking forms will be provided to the school to issue to pupils interested in lessons.

Lessons will only be set up where a viable number of pupils apply for lessons (ie 6 group pupils per discipline). Lessons are available either as individual 20min lessons or group 20 min lessons.

Parents/carers can register for lessons via <https://ukbradfordmusic.speedadmin.dk/registration#/>

- **School Billed**

Instrumental/vocal tuition purchased is charged at £726 per term/£2178 per annum for 1 hour of provision per week (+ VAT for Academies/Free Schools and organisations outside of the Bradford LEA) and invoiced directly to schools. Time can be booked in 10 minute increments with a minimum session bookable for any one discipline is 40 minutes.

Prices are based on the service delivering 30 instrumental/vocal lessons over an academic year. (This allows for staff sickness, training and events). Instrumental/vocal tuition is for small group teaching. This may be increased in blocks of 10 minutes which will be charged pro rata.

To book, please contact [schoolsmusicandarts@bradford.gov.uk](mailto:schoolsmusicandarts@bradford.gov.uk)

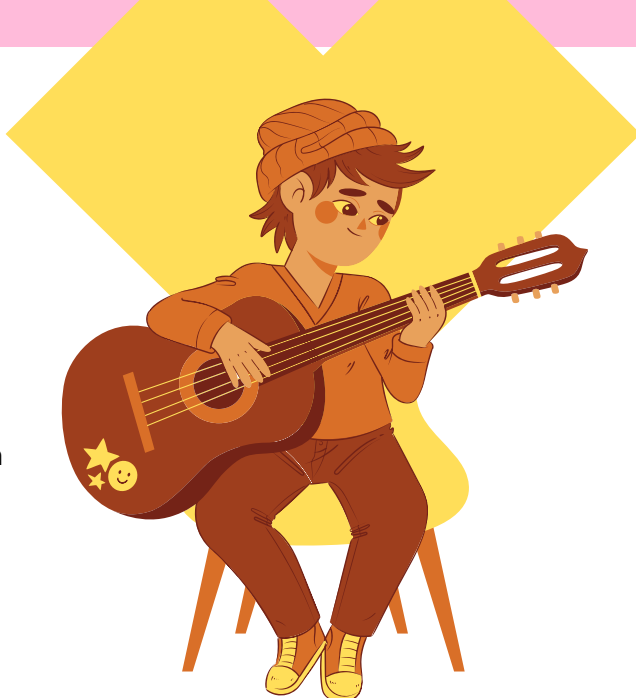
Please note that some age limitations may apply to specific instruments (e.g. we recommend that brass instruments are introduced from Year 3 upwards)

An increasing number of schools use Pupil Premium funding to support pupils' extra-curricular music activities and small group and individual instrumental/vocal tuition. Have you considered utilising the Pupil Premium in this way? The Music & Arts Service will provide a free instrument for the pupils if appropriate and available. The cost of this would be £70 per term for a group lesson and £188 per term for an individual lesson. If you wish to book lessons in this way you will need to complete a Pupil Premium Booking Form <https://www.bradfordmusiconline.co.uk/site/?s=buy+back>

You can also purchase time as stated previously.

Bradford Music & Arts Service are partnered with:

- Young Sounds UK to deliver free instrumental lessons, music centre fees, instrument loan, exam fees and an equipment bursary for a minimum of 100 children across the Bradford District. This is a national project that aims to further the musical journey of pupils from a low-income background, enabling them to continue to thrive in music after whole class ensemble music has finished. Application is through Laura Robinson [laura.robinson@bradford.gov.uk](mailto:laura.robinson@bradford.gov.uk) and Helen Borg [helen.borg@bradford.gov.uk](mailto:helen.borg@bradford.gov.uk) and is means tested.
- Bradford Music and Arts partners with Yorkshire Young Musicians on its Hub Partnership scheme. YYM financially supports pupils on the scheme with a first and second study lesson delivered by Bradford Music and Arts Service. YYM then provide additional workshops, classes and musical opportunities for the pupils on the scheme at their Sunday sessions held at Leeds Conservatoire. For further info please contact [helen.borg@bradford.gov.uk](mailto:helen.borg@bradford.gov.uk). Advanced pupils are signposted to CATs (Centres for Advanced Training) which are supported by the DfE's Music and Dance scheme. These include Yorkshire Young Musicians, Leeds Junior Conservatoire and RNCM Junior School.



# INSTRUMENT HIRE/LOAN SERVICE

We have a variety of options to support both pupils and schools in accessing an extensive range of musical instruments and equipment.

To access our Instrument Loan Service, please contact [schoolsmusicandarts@bradford.gov.uk](mailto:schoolsmusicandarts@bradford.gov.uk) detailing your requirements.

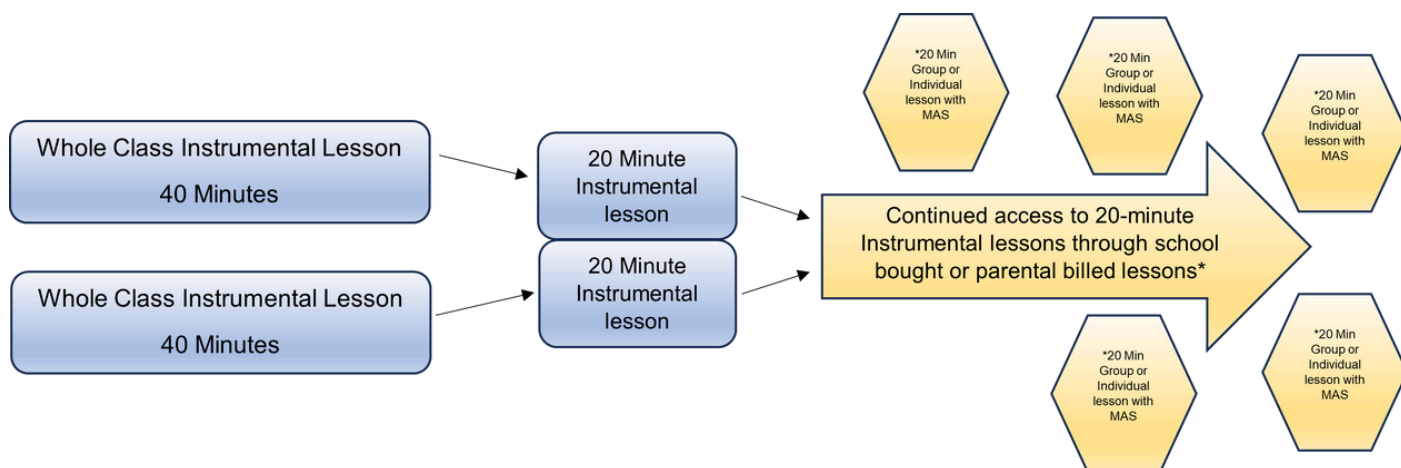


# WHOLE CLASS INSTRUMENTAL LEARNING

Both The National Plan for Music Education and Model Music Curriculum advise that all KS2 settings include a Whole Class Instrumental Learning (WCIL) plan in addition to their curriculum offer. The Music & Arts Service hosts a heavily subsidised WCIL package to ensure that every child has the opportunity to take their first steps in learning to play a musical instrument.

Our WCIL package, as detailed below, includes tuition from a specialist teacher, whole class instrumental loan and progression pathways so that those that want to go further in their instrumental learning can go further and works well in collaboration with both the school billed and parental billed packages mentioned previously.

The following graphic shows how our package works and is based on a 2-form entry school. 1 form and 3 form packages are also available.



WCIL packages are available on the following instruments:

## **BRASS**

Trumpet  
Cornet  
Baritone/Euphonium  
Trombone  
French Horn/Tenor Horn  
Mixed Brass

## **MUSIC TECH**

DAW\*

## **STRINGS**

Violin  
Viola  
Cello  
Mixed Strings

## **WOODWIND**

Recorder  
Flute  
Clarinet  
Saxophone

## **GUITAR**

Acoustic guitar  
Ukulele

## **PERCUSSION**

Samba  
Djembe  
Mixed Percussion\*

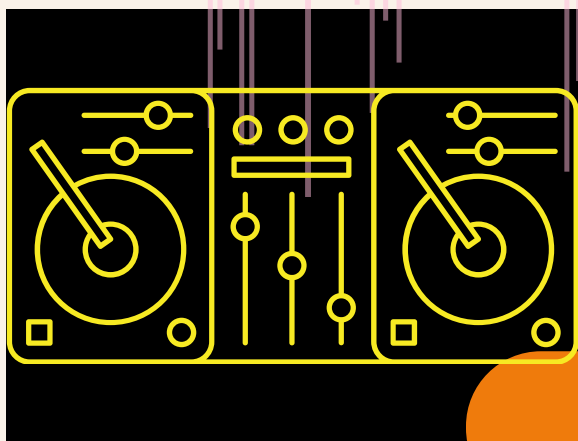
## **VOICE**

Vocal – all voices

## **KEYBOARD**

Keyboard

# MUSIC TECH WCIL



This year for the first time we are delighted to offer WCIL Music Technology to a limited number of schools. This new programme is designed to introduce students to a variety of different skills required for the modern musician. This includes key skills such as using Digital Audio Workstations (DAW's), understanding and inputting MIDI, recording and editing audio, sampling as an art form, composing through technology and recording live instruments.

Students will examine these skills through a series of project-based works, studying a variety of different iconic electronic music genres. Each week students will have to opportunity to listen to, discuss, analyse and create music using the computer as an instrument and will develop their own arrangements and original compositions to showcase their newly developed skills.



Due to the nature of how packages are created for school, prices are available on request.

***With the introduction of Music Hubs, Arts Council England require each LA to provide data that will be collated for a government return for pupils having first access to instrumental tuition and continuation. We therefore require all participating schools to provide class lists (UPN) for all pupils taking part in a KS2 scheme from September 2022 and any pupils who will be continuing tuition following their first and second year as soon as this is confirmed.***



# MUSIC CENTRE GROUPS

The Music & Arts Service provides a range of music group opportunities for children from all areas of the district to participate in a wide range bands and orchestras, catering for all abilities. This includes:

- Rock bands
- Guitar groups
- Percussion Ensemble
- String groups
- Orchestras
- Rock Choir
- Wind bands
- Brass bands



Being a member of a music group provides a wide range of opportunities for students of all ages and standards, from beginner upwards, to develop musicianship and playing skills. For most people, music has its greatest impact when played with others.

Concert performances are the goal of most of our music groups and are valuable experiences. We ensure that each of our music groups has regular and varied performance opportunities.

For more information on the ensemble opportunities for your children, including the weekly rehearsal schedule, please visit [www.bradfordmusiconline.co.uk/site/music-groups/about-our-music-groups](http://www.bradfordmusiconline.co.uk/site/music-groups/about-our-music-groups)

Parents can register their children for each music groups by visiting <https://ukbradfordmusic.speedadmin.dk/registration#/>

Membership is billed to the parent/carer at £55 per term and includes access to as many groups as children wish to attend. Support is available through our Remissions Policy on pages 22-23.



# LARGE SCALE EVENTS

The Music Service is proud to offer opportunities for all schools and education settings to bring their students to perform in large scale events. There are 3 annual opportunities each year, all held at St. George's Hall:

- **The Schools' Proms/Musica Spectacular** March/April

Monday evening's Musica Spectacular is hosted through a collaboration with SEND schools and is an accessible performance space for all to showcase their musical talents.

Tuesday and Wednesday evening's Schools' Prom is open to all settings and includes a 300+ strong Primary and SEND choir and individual performance slots for school groups to showcase their musical talents.

- **Come and Play with the Halle** July

Live performance experience for children participating in Whole Class Instrumental Learning to join with the world-famous Halle Orchestra, see the professional orchestra perform and participate on their own instruments and a Big Sing.

- **Swing Low Big Sing** October

Live performance and Big Sing in collaboration with St George's Hall with the theme of celebrating the heritage of Black History at St George's and the Bradford District.

In addition to these, other events take place such as termly Music Centre concerts that can involve school groups, and we have recently forged links with Cliffe Castle for students to perform there. There are usually other large-scale opportunities that emerge during the year that we offer to schools as appropriate. Recent examples include The Magic Flute and The Snowman.

All performance and participatory opportunities are shared via our Music Leader network list. To register to receive this information, please complete the registration form via <https://www.bradfordmusiconline.co.uk/site/music-network-sign-up/>

Unless otherwise stated, all performance opportunities are FREE to participate.

# SCHOOL BANDS, CHOIRS AND SINGING ASSEMBLIES



Additional provision to supplement your school music offer is available:

- Singing Assemblies, led by a specialist teacher and can be whole school or split by key stage
- After school/lunchtime choir led by a specialist teacher
- After school/lunchtime band led by a specialist teacher

- 30 mins £484 per term/£1472 per annum
- 45 mins £726 per term/£2178 per annum
- 60 mins £968 per term/£2904 per annum





# MUSIC CURRICULUM DELIVERY

This provision is delivered by a specialist music teacher who can lead and deliver your music curriculum in line with the National Curriculum and Model Music Curriculum. This can be delivered in line with your own school curriculum supported through a variety of resources such as Charanga, Sparkyard and Sing-Up.

This is offered to support schools where the music curriculum should be 'delivered and ideally delivered by a music specialist wherever possible, but where it isn't possible, by a designated music lead, supported with appropriate training and connected to support from their local Music Hub' (National Plan for Music Education).

Lessons will cover singing, listening, composing and performing. We will work with you to design the curriculum to support your school day and to meet the requirements as outlined in the model music curriculum.

Delivery normally offered as a whole day (5.5.hours) session to fit in line with your school curriculum.

## **2025-26 SPECIAL OFFER for schools booking Music Curriculum for the first time**

- **Whole day curriculum**
- **Includes 1 x 40 min Whole Class Instrumental Lesson on either clarinet/recorder\*/ukulele and 1 class set of instruments (must be delivered to the same class for the full year)**
- **Introductory price of £9999 per annum (subsidised from £16,671)**

\*recorders to be provided by the school

# ONE TO ONE CLASSROOM TEACHER/HTLA CPD SUPPORT

Offered to support staff who may need additional training and specialist support to teach the music curriculum in the classroom. A member of our specialist curriculum staff will work alongside your staff to offer support and assistance in the classroom and will model best practice in line with the National Plan for Music Education.

Support is provided as a peer-to-peer model, covering all aspects of planning and delivery of music and is a highly effective method of upskilling and building staff confidence.

Booked on a half-termly basis – £1595 per half term based on half a day per week.

## STAFF MEETING SUPPORT

Supporting the School Workforce to Deliver Music.

This CPD is to support your staff to gain confidence when delivering music and to be aware of the statutory obligations when teaching music in line with the National Curriculum and Model Music Curriculum. This is offered as a practical session to model 'what a good music lesson' looks like.

See also CPD programme below.

1 hour 30 mins CPD – £140 per session

## CPD PROGRAMME

Offered throughout the course of the year as a rolling programme to reflect the current needs and requirements of the National Plan for Music Education 'The Power of Music to Change Lives.'

Termly Network meetings are provided free of charge to Primary & SEND and Secondary & SEND as an opportunity to share good practice and reflect on current expectations in music education.



# NETWORK MEETINGS

Our free termly network meetings offer Primary, Secondary and SEND the opportunity to meet with colleagues also delivering music from across the district. Meetings refer to new initiatives, national updates and opportunities available for children locally and nationally.

A full list of CPD and Network Meeting dates is emailed to the music coordinator/lead and can be booked on via our website

<https://www.bradfordmusiconline.co.uk/site/cpd-network-meetings/>

To register to receive this information, please complete the registration form via <https://www.bradfordmusiconline.co.uk/site/music-network-sign-up/>



## ANNUAL AUDIT PROCESS

Music Hubs are tasked to visit schools and audit music provision in all schools on an annual basis to assess the provision of music across the local authority area. Not only does this provide an in-depth picture of provision, inform your Music Development Plan and future support needs, but it has also been valued by our schools for many years and acts as a supportive conversation for music leaders who are often isolated in leading their subject.

We offer this service to all our schools, across all phases to help schools to understand the importance of providing opportunities in and out of the classroom for music. We use the DfE guidelines to help identify and RAG rate the common features of high-quality music provision in your school. Some of the information gained from the audit is also reported back to the DfE to inform future funding for music support in the district.

This takes place as a 1-hour meeting in your school with one of our Senior Leadership Team.



# RESOURCES

As a Music Hub, we have brokered packages using our funding to support Bradford schools to access high quality online music resources and discounted rates. The following subsidies are available:

## Primary and SEND

- Charanga £75 per annum\* (discounted from full price up to £395 for a local school)
- SING UP 40% off annual membership\*\*. Please see [www.Singup.org](http://www.Singup.org) for pricing
- SPARKYARD 40% off annual membership\*\*. Please see [www.app.sparkyard.com](http://www.app.sparkyard.com) for pricing

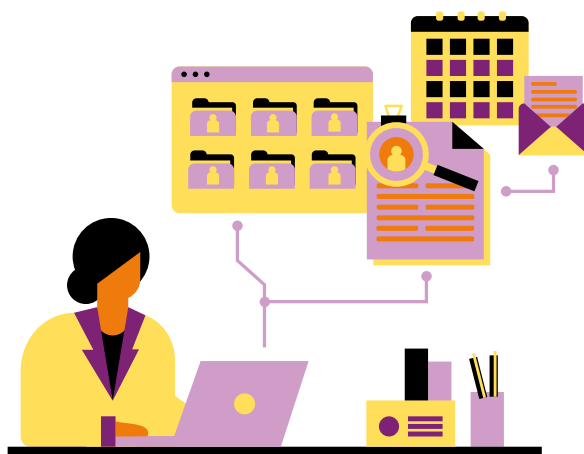
## Secondary and SEND

- Charanga £75 per annum\*\* (discounted from full price up to £395 for large school)
- SING UP Up to 40% off annual membership\*\*. Please see [www.Singup.org](http://www.Singup.org) for pricing

\*to access the subsidy, book alongside your Whole Class provision

\*\* contact [schoolsmusicandarts@bradford.gov.uk](mailto:schoolsmusicandarts@bradford.gov.uk) to receive subsidy.

*Discounts will not be applied without booking through the Music & Arts Service and must be contacted upon each renewal.*



# V I S U A L A R T S

The following opportunities are available for all primary schools within the Bradford District to support their Art curriculum offer.

Please visit our website

[www.bradfordmusiconline.co.uk](http://www.bradfordmusiconline.co.uk) and select 'Visual Arts'



# ARTS DAYS

These are delivered to whole year groups and are bespoke to the school. Typically consist of a themed art day linked with another foundation subject most often history. In a day a class will do an art appreciation activity, plan and create two pieces of art in chosen area. Art days once purchased can be split into 2 half day sessions (am only).

£524 per day

# INSET TRAINING

Twilight CPD sessions delivered to school staff on chosen topic and can be tied into staff meeting provision. Typical sessions may include:

- Using work of other artists
- Painting skills
- Printing skills
- 3D work

Other content for CPD is available, please contact [Anthony.bullock@bradford.gov.uk](mailto:Anthony.bullock@bradford.gov.uk) to discuss your needs

£140 per session

# CURRICULUM TEACHING

Strong curriculum links are tied into all our arts packages to bring the creative curriculum to life. School staff will feel competent in developing new ways to enthuse the children in their care. The packages available have a real impact on sustaining arts development within the schools and pupil development, not only in the arts but cutting across many curriculum areas. All packages are delivered over a maximum of three terms.

Art curriculum packages can be booked in the following packages. Bespoke packages can also be individually tailored for your school needs.

Silver	Gold	Platinum
<ul style="list-style-type: none"> <li>• Termly arts development meeting</li> <li>• 1 Staff training session (up to 2 hours)</li> <li>• 2 Arts days</li> </ul>	<ul style="list-style-type: none"> <li>• Termly arts development meeting</li> <li>• 1 Staff training session (up to 2 hours)</li> <li>• 4 Arts days</li> <li>• Arts week planning and support               <ul style="list-style-type: none"> <li>- Initial meeting with key staff</li> <li>- Draft programme</li> <li>- Confirmed programme (after consultation with school staff)</li> <li>- Evaluations (School /pupils/parents)</li> </ul> </li> </ul>	<ul style="list-style-type: none"> <li>• Termly arts development meeting</li> <li>• 1 Staff training session (up to 2 hours)</li> <li>• 7 Arts days</li> <li>• Arts week planning and support               <ul style="list-style-type: none"> <li>- Initial meeting with key staff</li> <li>- Draft programme</li> <li>- Confirmed programme (after consultation with school staff)</li> <li>- Evaluations (school/pupils/parents)</li> </ul> </li> </ul>
£1,599 per year	£2525 per year	£4124 per year

# MURALS

At the same cost of an Art day or a number of art days, our art specialist will design and paint school mural in collaboration with pupils and staff on the schools given theme. The mural can be external or internal (e.g. school hall or playground). You will be advised on how many days this would take or you could choose to get the mural started with the service and the school community takes over its completion.

Materials are additional to the art day price but generally a mural will cost no more than £30 in paint. Please contact for examples of past work.

# NETWORK MEETINGS

Termly meetings for art leads to share ideas and good practice and upcoming opportunities for children and schools to participate in and including free termly CPD for staff.

Information about our network meeting programme is shared via our Art Leader network list. To register to receive this information, please complete the registration form via <https://www.bradfordmusiconline.co.uk/site/art-network-sign-up/>

# COMPETITIONS, EXHIBITIONS AND EVENTS

## Annual Christmas Card Competition

- brief goes live September and circulated via the art leader network email list
- deadline October half term.
- Winning entries are converted made into an e-card for council leaders and entrants are invited to an awards ceremony at City Hall and receive a winner's prize and certificate.
- FREE TO ENTER

## Annual Eid Card Competition

- brief goes live January and circulated via the art leader network email list
- deadline February half term
- Winning entries are converted made into an e-card for council leaders and entrants are invited to an awards ceremony at City Hall and receive a winner's prize and certificate.
- FREE TO ENTER

Building on the success of past exhibitions in collaboration with Bradford College, an exhibition for 2026 will be launched in autumn term and information shared via the art leader network email list.

FREE TO ENTER



# **ARTS ADVICE AND SUPPORT**

If you are interested in any of these services or simply want free arts advice on visual arts in your school, please contact

**[Anthony.bullock@bradford.gov.uk](mailto:Anthony.bullock@bradford.gov.uk)**

Information about our network meetings are shared via our Art Leader network list. To register to receive this information, please complete the registration form via **<https://www.bradfordmusiconline.co.uk/site/art-network-sign-up/>**

CANCELLATION CLAUSE – Booking commits the school to one full academic year. Cancellation before that time will only be agreed in exceptional circumstances and must be put in writing and accepted by the Head of the Music & Arts Service. Full charges for the whole academic year will otherwise be fully payable.

Bradford Council is fully committed to compliance with the requirements of the General Data Protection Regulation and the Data Protection Act 2018. “To learn more about how we use your information, go to [www.bradford.gov.uk/privacy-notice](http://www.bradford.gov.uk/privacy-notice) and the Music & Arts Service Privacy Policy go to <https://www.bradfordmusiconline.co.uk/site/changes-to-data-protection-legislation-25-may-2018/>

### Special Requirements

Due to the complexity of timetabling a peripatetic service across the whole district, all bookings are subject to staffing and resource availability. Whilst we endeavour to meet school requests, we cannot guarantee specific requests for days/time/staff member.

# CHARGING AND REMISSIONS POLICY

## Fees & Charges

Instrumental tuition fees paid directly to Bradford Music & Arts Service

Provision	Termly Charge
20 min Small Group Instrumental Lesson	£70
20 min Individual Lesson	£188
Music Centre Membership*	£55

\*Membership to Music Centre Ensembles allows access to a minimum of one ensemble. Additional ensembles may be accessed at no additional cost. Where membership to Bradford Youth Training Orchestra or Electronic Keyboard Orchestra is the only ensemble attended, a reduced fee of £28 per term is charged and rehearsals are once per month.

Charges for all school bought Music and Visual Arts provision is shared directly with schools in spring term in preparation for bookings for the following academic year. For charges for bookings commencing for school provision commencing after the start of the academic year, please contact [schoolsmusicandarts@bradford.gov.uk](mailto:schoolsmusicandarts@bradford.gov.uk).

## Remissions

- Instrumental and Vocal Lesson Remissions:
  - Schools are requested to utilise the Pupil Premium to support lessons. Please see individual school Pupil Premium Policy
- Ensemble Remissions:
  - Remission places (free membership) at ensembles may be taken up at any point in the academic year if a pupil is on free school meals and has reached the appropriate standard for the ensemble – to be reviewed annually.
- Special Education Need Remissions – Bursary Places:
  - All cases to be looked at on an individual basis
  - Where appropriate an individual lesson will be offered for the price of a group lesson.
  - To apply, submit a letter of support from the pupil's Headteacher to [schoolsmusicandarts@bradford.gov.uk](mailto:schoolsmusicandarts@bradford.gov.uk)
  - SEND remissions can be taken up at any point in the academic year where instrumental/vocal teachers are available.
- Virtual School/Looked After Children Remission
  - Pupils who are a Bradford Looked After Child may apply for a fully subsidised group lesson which includes an instrument via the Virtual School Booking Form – contact either your child's social worker or [schoolsmusicandarts@bradford.gov.uk](mailto:schoolsmusicandarts@bradford.gov.uk)
  - Includes free accessing to Music Centre Ensembles
  - Supported by CBMDC Virtual School



# CHARGING AND REMISSIONS POLICY

- CONNECT we are partnered with Young Sounds UK to deliver free instrumental lessons, music centre fees, instrument loan, exam fees and an equipment bursary for a minimum of 100 children across the Bradford District.
  - This is a national project that aims to further the musical journey of pupils from a low-income background, enabling them to continue to thrive in music after whole class ensemble music has finished.
  - Application is through Laura Robinson [laura.robinson@bradford.gov.uk](mailto:laura.robinson@bradford.gov.uk) and Helen Borg [helen.borg@bradford.gov.uk](mailto:helen.borg@bradford.gov.uk) and is means tested.
  - Further information can be found Young Sounds Connect – Young Sounds
  - ALL Connect pupils (formally Furthering Talent pupils) receive free ABRSM Practical and Performance exams. Applications for discount codes for Connect pupils must be sent to Laura Robinson [laura.robinson@bradford.gov.uk](mailto:laura.robinson@bradford.gov.uk). Requests for entries for Practical ABRSM exams will be made at the beginning of each term but ABRSM Performance exam entries or Music Medals can be made at any time throughout the term.
- Delius School – Music School for Gifted and Talented Pupils
  - Annual application process, application open in summer term.
  - Key Stage 2 pupils
  - Non means tested
  - Access to free monthly workshops, annual trips, composition and performance skills development and wider performance opportunities.
  - Where tuition is made through the service, an individual lesson will be offered at the cost of a small group lesson
- ABRSM exams including Practical, Performance and Music Medal exams for LAC pupils and pupils from an area of low exam uptake can apply for up to a 95% discount for the exam fee. Applications for discount codes must be sent to [helen.borg@bradford.co.uk](mailto:helen.borg@bradford.co.uk) and can be made at any time throughout the year. Application can be made by MAS staff and all Bradford school staff.





# BRADFORD MUSIC & ARTS SERVICE

**Music & Arts Service**  
**21 Market Street**  
**Shipley**  
**BD18 3QD**

**[schoolsmusicandarts@bradford.gov.uk](mailto:schoolsmusicandarts@bradford.gov.uk)**

**<https://www.bradfordmusiconline.co.uk/site/>**