



BRADFORD MUSIC & ARTS SERVICE

DISCOVER WHAT WE CAN OFFER YOUR SCHOOL

Academic Year

BUY BACK 26/27



TABLE OF CONTENTS

3 - INTRODUCTION

MUSIC

INSTRUMENTAL LEARNING

5 - IN SCHOOL INSTRUMENTAL LESSONS

7 - INSTRUMENT HIRE/LOAN SERVICE

8 - WHOLE CLASS INSTRUMENTAL LEARNING

9 - MUSIC TECH WCIL

10 - MUSIC CENTRE GROUPS

11 - LARGE SCALE EVENTS

12 - SCHOOL BANDS, CHOIRS AND SINGING ASSEMBLIES

13 - MUSIC CURRICULUM DELIVERY

CONTINUED PROFESSIONAL DEVELOPMENT

14 - ONE TO ONE CLASSROOM SUPPORT

14 - STAFF MEETING SUPPORT

14 - CPD PROGRAMME

15 - NETWORK MEETINGS

15 - ANNUAL AUDIT PROCESS

16 - RESOURCES

VISUAL ARTS

18 - ARTS DAYS

18 - INSET TRAINING

18 - ARTS PACKAGES

18 - CURRICULUM TEACHING

19 - MURALS

19 - NETWORK MEETINGS

19 - COMPETITIONS, EXHIBITIONS AND EVENTS

20 - ADVICE AND SUPPORT

22 - CHARGING AND

REMISSIONS POLICY



INTRODUCTION

Bradford Music & Arts Service is a department of Children's Services within City of Bradford Metropolitan District Council. We have a team of specialist teachers delivering a wide range of provision covering both music and the visual arts. To find out more about the Music & Arts Service, visit www.bradfordmusiconline.co.uk

We are also the Lead Organisation of the West Yorkshire Music Hub and work in a close strategic partnership with Artforms Leeds, Calderdale Music, Musica Kirklees and Wakefield Music Service. Through this structure, we can gain DfE and Arts Council England funding to support musical provision and opportunities within the Bradford District that pupils can access directly or through their schools. To find out more about the West Yorkshire Music Hub, visit www.westyorkshireremusicshub.org.uk

Bradford Music & Arts Service will continue to support schools in giving every pupil first access to instrumental tuition as well as providing progression opportunities and a range of performance and wider experiences to children.

As a service, we are committed to making musical and visual art opportunities for every child in Bradford. Our services are packaged to provide all pupils with the opportunity for one year of whole class tuition and continuation. All of our service packages continue to be heavily subsidised and tailored to each school's individual needs.

First and foremost, we are here to support Bradford schools and children and we actively encourage all education settings to engage with our offer and provide high quality arts education for all. This document summarises our extensive offer. Please take a few moments to look at the many options available.



Carl White
Head of Service



M

U

S

T

C



IN SCHOOL INSTRUMENTAL LESSONS

In school instrumental tuition is available on a wide range of musical instruments and delivered by specialist teaching staff. We host a range of demonstration videos covering the instruments taught on our website which can be shared with parents and is available www.bradfordmusiconline.co.uk/site/demonstration-videos/

Instrumental lessons follow progressive learning on the chosen instrument/s following The Common Approach and NQF and links into our Whole Class Instrumental Learning programme for schools as a part of the Pathway to Progression, ensuring that all schools are meeting their requirements set in The National Plan for Music Education.

Pupils can opt to take formal assessments such as:

- Graded practical and digital exams (ABRSM, Trinity, etc)
- Music Medals

Subsidised access to instrumental lessons is available where additional support is required. Please see our Remissions Policy on pages 22–23 for more details.

We have a range of payment options to fit your school community, and include:

- **Direct/Parental Billed**

Parental/direct billing is available via the Music & Arts Service where parents book instrumental/vocal lessons directly with the service. Parents are invoiced on a termly basis for the instrumental/vocal lessons delivered.

Parental/direct billing gives parents the option to pay by direct debit or credit/debit card. Parental/Direct billing instrumental/vocal booking forms will be provided to the school to issue to pupils interested in lessons.

Lessons will only be set up where a viable number of pupils apply for lessons (ie 6 group pupils per discipline). Lessons are available either as individual 20min lessons or group 20 min lessons.

Parents/carers can register for lessons via <https://ukbradfordmusic.speedadmin.dk/registration#/>

- **School Billed**

Instrumental/vocal tuition purchased is charged at £756 per term/£2268 per annum for 1 hour of provision per week (+ VAT for Academies/Free Schools and organisations outside of the Bradford LEA) and invoiced directly to schools. Time can be booked in 10 minute increments with a minimum session bookable for any one discipline is 40 minutes.

Prices are based on the service delivering 30 instrumental/vocal lessons over an academic year. (This allows for staff sickness, training and events). Instrumental/vocal tuition is for small group teaching. This may be increased in blocks of 10 minutes which will be charged pro rata.

To book, please contact schoolsmusicandarts@bradford.gov.uk

Please note that some age limitations may apply to specific instruments (e.g. we recommend that brass instruments are introduced from Year 3 upwards)

An increasing number of schools use Pupil Premium funding to support pupils' extra-curricular music activities and small group and individual instrumental/vocal tuition. Have you considered utilising the Pupil Premium in this way? The Music & Arts Service will provide a free instrument for the pupils if appropriate and available. The cost of this would be £75 per term for a group lesson and £196 per term for an individual lesson. If you wish to book lessons in this way you will need to complete a Pupil Premium Booking Form <https://www.bradfordmusiconline.co.uk/site/?s=buy+back>



You can also purchase time as stated previously.

Bradford Music & Arts Service are partnered with:

- Young Sounds UK to deliver free instrumental lessons, music centre fees, instrument loan, exam fees and an equipment bursary for a minimum of 100 children across the Bradford District. This is a national project that aims to further the musical journey of pupils from a low-income background, enabling them to continue to thrive in music after whole class ensemble music has finished. Application is through Laura Robinson laura.robinson@bradford.gov.uk and Helen Borg helen.borg@bradford.gov.uk and is means tested.
- Bradford Music and Arts partners with Yorkshire Young Musicians on its Hub Partnership scheme. YYM financially supports pupils on the scheme with a first and second study lesson delivered by Bradford Music and Arts Service. YYM then provide additional workshops, classes and musical opportunities for the pupils on the scheme at their Sunday sessions held at Leeds Conservatoire. For further info please contact helen.borg@bradford.gov.uk. Advanced pupils are signposted to CATs (Centres for Advanced Training) which are supported by the DfE's Music and Dance scheme. These include Yorkshire Young Musicians, Leeds Junior Conservatoire and RNCM Junior School.



INSTRUMENT HIRE/LOAN SERVICE

We have a variety of options to support both pupils and schools in accessing an extensive range of musical instruments and equipment.

To access our Instrument Loan Service, please contact schoolsmusicandarts@bradford.gov.uk detailing your requirements.

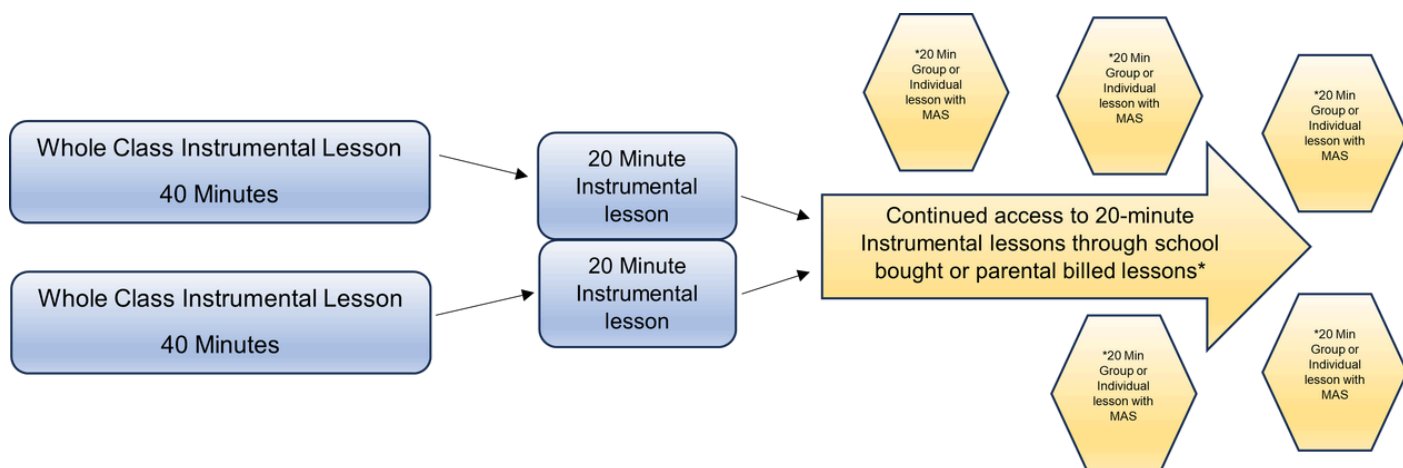


WHOLE CLASS INSTRUMENTAL LEARNING

Both The National Plan for Music Education and Model Music Curriculum advise that all KS2 settings include a Whole Class Instrumental Learning (WCIL) plan in addition to their curriculum offer. The Music & Arts Service hosts a heavily subsidised WCIL package to ensure that every child has the opportunity to take their first steps in learning to play a musical instrument.

Our WCIL package, as detailed below, includes tuition from a specialist teacher, whole class instrumental loan and progression pathways so that those that want to go further in their instrumental learning can go further and works well in collaboration with both the school billed and parental billed packages mentioned previously.

The following graphic shows how our package works and is based on a 2-form entry school. 1 form and 3 form packages are also available.



WCIL packages are available on the following instruments:

BRASS

Trumpet
 Cornet
 Baritone/Euphonium
 Trombone
 French Horn/Tenor Horn
 Mixed Brass

KEYBOARD

Keyboard

STRINGS

Violin
 Viola
 Cello
 Mixed Strings

WOODWIND

Recorder
 Flute
 Clarinet
 Saxophone

GUITAR

Acoustic guitar
 Ukulele

PERCUSSION

Samba
 Djembe
 Mixed Percussion

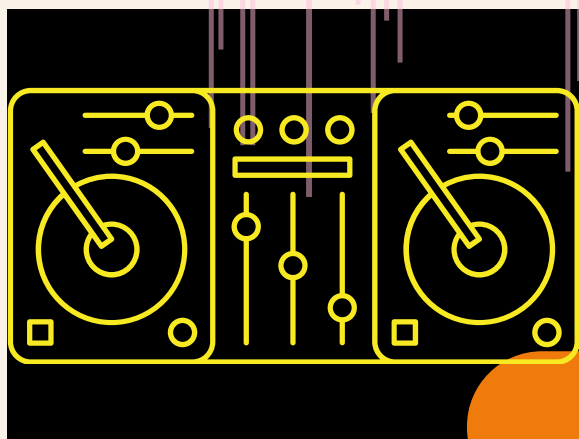
VOICE

Vocal - all voices

MUSIC TECH

Digital Audio Workstations (DAW)

MUSIC TECH WCIL



We are delighted to offer WCIL Music Technology to a limited number of schools. This new programme is designed to introduce students to a variety of different skills required for the modern musician. This includes key skills such as using Digital Audio Workstations (DAW's), understanding and inputting MIDI, recording and editing audio, sampling as an art form, composing through technology and recording live instruments.

Students will examine these skills through a series of project-based works, studying a variety of different iconic electronic music genres. Each week students will have to opportunity to listen to, discuss, analyse and create music using the computer as an instrument and will develop their own arrangements and original compositions to showcase their newly developed skills.



Due to the nature of how packages are created for school, prices are available on request.

MUSIC CENTRE GROUPS

The Music & Arts Service provides a range of music group opportunities for children from all areas of the district to participate in a wide range bands and orchestras, catering for all abilities. This includes:

- Rock bands
- Guitar groups
- Percussion Ensemble
- String groups
- Orchestras
- Rock Choir
- Wind bands
- Brass bands
- Keyboard groups



Being a member of a music group provides a wide range of opportunities for students from beginner upwards, to develop social, musical, and playing skills. For most people, music has its greatest impact when played with others, enabling a sense of belonging.

We ensure that each of our music groups has regular and varied performance opportunities.

For more information on the ensemble opportunities for your children, including the weekly rehearsal schedule, please visit www.bradfordmusiconline.co.uk/site/music-groups/about-our-music-groups

We ask schools to encourage their pupils to try a music centre group, as you have closer connections with parents/carers,

Parents can register their children for each music groups by visiting <https://ukbradfordmusic.speedadmin.dk/registration#/>

Membership is billed to the parent/carer at £60 per term and includes access to as many groups as children wish to attend. Support is available through our Remissions Policy on pages 22-23.

LARGE SCALE EVENTS



The Music Service is proud to offer opportunities for all schools and education settings to bring their students to perform in large scale events. There are 3 annual opportunities each year, all held at St. George's Hall:

- **The Schools' Proms/Musica Spectacular** March/April

Monday evening's Musica Spectacular is hosted through a collaboration with SEND schools and is an accessible performance space for all to showcase their musical talents.

Tuesday and Wednesday evening's Schools' Prom is open to all settings and includes a 300+ strong Primary and SEND choir and individual performance slots for school groups to showcase their musical talents.

- **Come and Play with the Halle** July

Live performance experience for children participating in Whole Class Instrumental Learning to join with the world-famous Halle Orchestra, see the professional orchestra perform and participate on their own instruments and a Big Sing.

In addition to these, other events take place such as termly Music Centre concerts that can involve school groups, and we have recently forged links with Cliffe Castle for students to perform there. There are usually other large-scale opportunities that emerge during the year that we offer to schools as appropriate. Recent examples include The Magic Flute and And our World Record Breaking Bradford Schools' Extravaganza 2025 in Bradford Live

All performance and participatory opportunities are shared via our Music Leader network list. To register to receive this information, please complete the registration form via <https://www.bradfordmusiconline.co.uk/site/music-network-sign-up/>

Unless otherwise stated, all performance opportunities are FREE to participate.

SCHOOL BANDS, CHOIRS AND SINGING ASSEMBLIES



Additional provision to supplement your school music offer is available:

- Singing Assemblies, led by a specialist teacher and can be whole school or split by key stage
- After school/lunchtime choir led by a specialist teacher
- After school/lunchtime band led by a specialist teacher

- 30 mins £504 per term/£1512 per annum
- 45 mins £756 per term/£2268 per annum
- 60 mins £1008 per term/£3024 per annum



MUSIC CURRICULUM DELIVERY

This provision is delivered by a specialist music teacher who can lead and deliver your music curriculum in line with the National Curriculum and Model Music Curriculum. This can be delivered in line with your own school curriculum supported through a variety of resources such as Charanga, Sparkyard, Sing-Up, and Musical Futures.

This is offered to support schools where the music curriculum should be 'delivered and ideally delivered by a music specialist wherever possible, but where it isn't possible, by a designated music lead, supported with appropriate training and connected to support from their local Music Hub' (National Plan for Music Education).

Lessons will cover singing, listening, composing and performing. We will work with you to design the curriculum to support your school day and to meet the requirements as outlined in the model music curriculum.

Delivery normally offered as a whole day (5.5 hours) session to fit in line with your school curriculum.

Curriculum price 2026-27	Costings
Can be used by schools to cover their full music curriculum. Day to be designed by you using one of our Digital platforms above.	Prices are based on a normal teaching day (5.5 hours) including a suitable break and lunch
Introductory offer/Year 1 only	£9,999 first year only for new schools to include free access to classroom instruments if required
Year 2	£12,000 for an academic year for 1 day per week. Instrumental hire available on request, subject to availability
Year 3 onwards	£15,000 for an academic year for 1 day per week. Instrumental hire available on request, subject to availability

ONE TO ONE CLASSROOM TEACHER/HTLA CPD SUPPORT

Offered to support staff who may need additional training and specialist support to teach the music curriculum in the classroom. A member of our specialist curriculum staff will work alongside your staff to offer support and assistance in the classroom and will model best practice in line with the National Plan for Music Education.

Support is provided as a peer-to-peer model, covering all aspects of planning and delivery of music and is a highly effective method of upskilling and building staff confidence.

Booked on a half-termly basis - £1659 per half term based on half a day per week.

STAFF MEETING SUPPORT

Supporting the School Workforce to Deliver Music.

This CPD is to support your staff to gain confidence when delivering music and to be aware of the statutory obligations when teaching music in line with the National Curriculum and Model Music Curriculum. This is offered as a practical session to model 'what a good music lesson' looks like.

See also CPD programme below.

1 hour 30 mins CPD - £200 per session

CPD PROGRAMME

Offered throughout the course of the year as a rolling programme to reflect the current needs and requirements of the National Plan for Music Education 'The Power of Music to Change Lives.'

Termly Network meetings are provided free of charge to Primary & SEND and Secondary & SEND as an opportunity to share good practice and reflect on current expectations in music education.

NETWORK MEETINGS

Our free termly network meetings offer Primary, Secondary and SEND the opportunity to meet with colleagues also delivering music from across the district. Meetings refer to new initiatives, national updates and opportunities available for children locally and nationally.

A full list of CPD and Network Meeting dates is emailed to the music coordinator/lead and can be booked on via our website

<https://www.bradfordmusiconline.co.uk/site/cpd-network-meetings/>

To register to receive this information, please complete the registration form

via <https://www.bradfordmusiconline.co.uk/site/music-network-sign-up/>




ANNUAL AUDIT PROCESS

Music Hubs are tasked to visit schools and audit music provision in all schools on an annual basis to assess the provision of music across the local authority area. Not only does this provide an in-depth picture of provision, inform your Music Development Plan and future support needs, but it has also been valued by our schools for many years and acts as a supportive conversation for music leaders who are often isolated in leading their subject.

We offer this service to all our schools, across all phases to help schools to understand the importance of providing opportunities in and out of the classroom for music. We use the DfE guidelines to help identify and RAG rate the common features of high-quality music provision in your school. Some of the information gained from the audit is also reported back to the DfE to inform future funding for music support in the district.

This takes place as a 1-hour meeting in your school with one of our Senior Leadership Team.



RESOURCES

As part of our continued support to schools, we have moved to a more flexible subsidised digital resource offer. This is to enable you to have greater flexibility and choice when organising your curriculum and extra-curricular activities.

Please note the digital resources will be charged from September – August regardless of when the package is taken.

2026-27 Digital Resource Package

Primary Package 1	Primary Package 2	Secondary Package 1	Secondary Package 2
£150 for 1 school licence (select 1 from below)	£200 for 2 school licences (select any 2 from below)	£250 for 1 school licence (Select 1 from below)	£350 for 2 school licences (Select any 2 from below)
Charanga	Charanga	Charanga Secondary Music Suite	Charanga Secondary Music Suite
Sing-Up	Sing-Up	Sing-Up	Sing-Up
Sparkyard	Sparkyard	Musical Futures Secondary (Ultimate Package)	Musical Futures Secondary (Ultimate Package)
	Musical Futures online (Premium Package)	Ableton Live	Ableton Live

For any licenses above and beyond the subsidised offer (maximum of 2) above please contact the supplier directly to arrange. Please note that the above prices are based on an academic year or part the of.

N.B Musical Futures online - Not included in the Primary package 1 offer please go direct to the supplier.

V

A

I

R

S

T

U

S

A

L

The following opportunities are available for all primary schools within the Bradford District to support their Art curriculum offer.

Please visit our website

www.bradfordmusiconline.co.uk and select

'Visual Arts'

ARTS DAYS

These are delivered to whole year groups and are bespoke to the school. Typically consist of a themed art day linked with another foundation subject most often history. In a day a class will do an art appreciation activity, plan and create two pieces of art in chosen area. Art days once purchased can be split into 2 half day sessions (am only).
£545 per day

INSET TRAINING

Twilight CPD sessions delivered to school staff on chosen topic and can be tied into staff meeting provision. Typical sessions may include:

- Using work of other artists
- Painting skills
- Printing skills
- 3D work
- Printing in the primary school
- Approaching still life

Other content for CPD is available, please contact Anthony.bullock@bradford.gov.uk to discuss your needs.

£200 per session

ART PACKAGES

Strong curriculum links are tied into all our arts packages to bring the creative curriculum to life. School staff will feel competent in developing new ways to enthuse the children in their care. The packages available have a real impact on sustaining arts development within the schools and pupil development, not only in the arts but cutting across many curriculum areas. All packages are delivered over a maximum of three terms.

Art packages can be booked in the following packages. Bespoke packages can also be individually tailored for your school needs.

Silver	Gold	Platinum
<ul style="list-style-type: none"> • Termly arts development meeting • 1 Staff training session (up to 2 hours) • 2 Arts days 	<ul style="list-style-type: none"> • Termly arts development meeting • 1 Staff training session (up to 2 hours) • 4 Arts days • Arts week planning and support <ul style="list-style-type: none"> - Initial meeting with key staff - Draft programme - Confirmed programme (after consultation with school staff) - Evaluations (School /pupils/parents) 	<ul style="list-style-type: none"> • Termly arts development meeting • 1 Staff training session (up to 2 hours) • 7 Arts days • Arts week planning and support <ul style="list-style-type: none"> - Initial meeting with key staff - Draft programme - Confirmed programme (after consultation with school staff) - Evaluations (school/pupils/parents)
£1663 per year	£2626 per year	£4289 per year

CURRICULUM TEACHING

Afternoon sessions only

Our art lead will deliver your art curriculum weekly following and or developing your school curriculum planning. In most cases lessons, will be delivered with staff to provide and incorporate further CPD.

MURALS

At the same cost of an Art day or a number of art days, our art specialist will design and paint school mural in collaboration with pupils and staff on the schools given theme. The mural can be external or internal (e.g. school hall or playground). You will be advised on how many days this would take or you could choose to get the mural started with the service and the school community takes over its completion.

Materials are additional to the art day price but generally a mural will cost no more than £30 in paint. Please contact for examples of past work.

NETWORK MEETINGS

Termly meetings for art leads to share ideas and good practice and upcoming opportunities for children and schools to participate in and including free termly CPD for staff.

Information about our network meeting programme is shared via our Art Leader network list. To register to receive this information, please complete the registration form via <https://www.bradfordmusiconline.co.uk/site/art-network-sign-up/>

COMPETITIONS, EXHIBITIONS AND EVENTS

Annual Christmas Card Competition

- brief goes live September and circulated via the art leader network email list
- deadline October half term.
- Winning entries are converted made into an e-card for council leaders and entrants are invited to an awards ceremony at City Hall and receive a winner's prize and certificate.
- FREE TO ENTER

Annual Eid Card Competition

- brief goes live January and circulated via the art leader network email list
- deadline February half term
- Winning entries are converted made into an e-card for council leaders and entrants are invited to an awards ceremony at City Hall and receive a winner's prize and certificate.
- FREE TO ENTER

Building on the success of past exhibitions in collaboration with Bradford College, an exhibition for 2026 will be launched in autumn term and information shared via the art leader network email list.

FREE TO ENTER

ARTS ADVICE AND SUPPORT

If you are interested in any of these services or simply want free arts advice on visual arts in your school, please contact

Anthony.bullock@bradford.gov.uk



CANCELLATION CLAUSE – Booking commits the school to one full academic year. Cancellation before that time will only be agreed in exceptional circumstances and must be put in writing and accepted by the Head of the Music & Arts Service. Full charges for the whole academic year will otherwise be fully payable.

Bradford Council is fully committed to compliance with the requirements of the General Data Protection Regulation and the Data Protection Act 2018. “To learn more about how we use your information, go to www.bradford.gov.uk/privacy-notice

Special Requirements

Due to the complexity of timetabling a peripatetic service across the whole district, all bookings are subject to staffing and resource availability. Whilst we endeavour to meet school requests, we cannot guarantee specific requests for days/time/staff member.

CHARGING AND REMISSIONS POLICY

Fees & Charges

Instrumental tuition fees paid directly to Bradford Music & Arts Service

- 20 min Small Group Instrumental Lesson - £75
- 20 min Individual Lesson - £196
- Music Centre Membership* - £60

*Membership to Music Centre Ensembles allows access to a minimum of one ensemble. Additional ensembles may be accessed at no additional cost. Where membership to Bradford Youth Training Orchestra or Electronic Keyboard Orchestra is the only ensemble attended, a reduced fee of £28 per term is charged and rehearsals are once per month.

Charges for all school bought Music and Visual Arts provision is shared directly with schools in spring term in preparation for bookings for the following academic year. For charges for bookings commencing for school provision commencing after the start of the academic year, please contact schoolsmusicandarts@bradford.gov.uk.

Remissions

- Instrumental and Vocal Lesson Remissions:
 - Schools are requested to utilise the Pupil Premium to support lessons. Please see individual school Pupil Premium Policy
- Ensemble Remissions:
 - Remission places (free membership) at ensembles may be taken up at any point in the academic year if a pupil is on free school meals and has reached the appropriate standard for the ensemble – to be reviewed annually.
- Special Education Need Remissions – Bursary Places:
 - All cases to be looked at on an individual basis
 - Where appropriate an individual lesson will be offered for the price of a group lesson.
 - To apply, submit a letter of support from the pupil's Headteacher to schoolsmusicandarts@bradford.gov.uk
 - SEND remissions can be taken up at any point in the academic year where instrumental/vocal teachers are available.
- Virtual School/Looked After Children Remission
 - Pupils who are a Bradford Looked After Child may apply for a fully subsidised group lesson which includes an instrument via the Virtual School Booking Form – contact either your child's social worker or contact schoolsmusicandarts@bradford.gov.uk
 - Includes free accessing to Music Centre Ensembles
 - Supported by CBMDC Virtual School



CHARGING AND REMISSIONS POLICY

- CONNECT we are partnered with Young Sounds UK to deliver free instrumental lessons, music centre fees, instrument loan, exam fees and an equipment bursary for a minimum of 100 children across the Bradford District.
 - This is a national project that aims to further the musical journey of pupils from a low-income background, enabling them to continue to thrive in music after whole class ensemble music has finished.
 - Application is through Laura Robinson laura.robison@bradford.gov.uk and Helen Borg helen.borg@bradford.gov.uk and is means tested.
 - Further information can be found [Young Sounds Connect - Young Sounds](#)
 - ALL Connect pupils (formally Furthering Talent pupils) receive free ABRSM Practical and Performance exams. Applications for discount codes for Connect pupils must be sent to Laura Robinson laura.robison@bradford.gov.uk. Requests for entries for Practical ABRSM exams will be made at the beginning of each term but ABRSM Performance exam entries or Music Medals can be made at any time throughout the term.
- Delius School – Music School for Gifted and Talented Pupils
 - Annual application process, application open in summer term.
 - Key Stage 2 pupils
 - Non means tested
 - Access to free monthly workshops, annual trips, composition and performance skills development and wider performance opportunities.
 - Where tuition is made through the service, an individual lesson will be offered at the cost of a small group lesson
- ABRSM exams including Practical, Performance and Music Medal exams for LAC pupils and pupils from an area of low exam uptake can apply for up to a 95% discount for the exam fee. Applications for discount codes must be sent to helen.borg@bradford.co.uk and can be made at any time throughout the year. Application can be made by Bradford Music & Arts Service staff and all Bradford school staff.





BRADFORD MUSIC & ARTS SERVICE

Music & Arts Service
21 Market Street
Shipley
BD18 3QD

schoolsmusicandarts@bradford.gov.uk

<https://www.bradfordmusiconline.co.uk/site/>